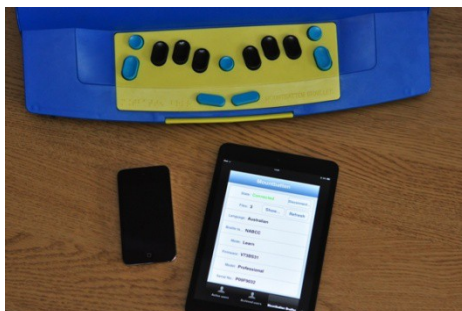


## MBMimic for iOS



The **MBMimic** is a communication app that supports the production of hard copy Braille output and interaction with a Braille user. The app can be operated by the sighted as well as by the blind. It is fully accessible when VoiceOver is running on your iOS device\*<sup>1</sup>.

### 1. With the MBMimic you can:

1. Create a list of users (e.g. students)
2. Assign folders with specific content to each student
3. Transfer files among your students
4. Transfer files from apps like Documents to MBMimic
5. Retrieve files from your students' Mountbattens
6. Read files stored in your students' Mountbattens
7. Send files to your students' Mountbattens
8. Email files retrieved from the Mountbatten
9. Emboss files stored in your iOS device
10. Chat with the Mountbatten user using the Chat application
11. Help your students learn to spell words using the Whiteboard application
12. Check if your student can read contracted or uncontracted Braille

MBMimic is made up of three tabs: Active Users, Archived Users, and Mountbatten.

**The Active Users tab** is meant for lists of users, e.g. students, who actively use the Mountbatten.

---

<sup>1</sup>

**The Archived Users tab** was created to let the teachers keep information from previous years so that they do not interfere with current users.

**The Mountbatten tab** is used to establish connection with the Mountbatten, interact using the Chat or Whiteboard applications, check the Mountbatten's memory, or find out the firmware version of the Mountbatten unit.

To run the app locate it on your iOS device, tap and wait for the app to open. Tap one of the three tabs you want to work with at the bottom of the screen.

## 2. Active Users

When you tap the Active Users tab you will see a long button Add user... (see Figure 1). Tap this button to open the Edit user (see Figure 2) box where you are asked to enter the full name of the user as well as the display name. Once you have completed the information tap Done and your first active user will be added to the list.

**NOTE:** It is recommended but not necessary to complete all the fields in the Edit user box.

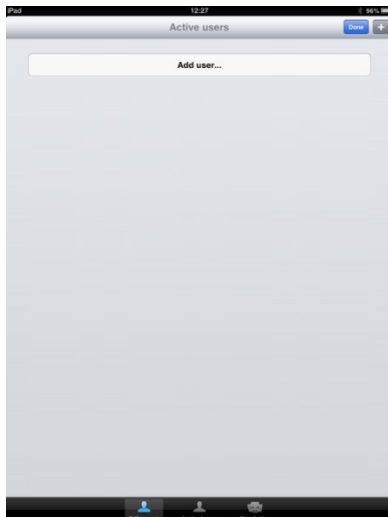


Figure Add user ...

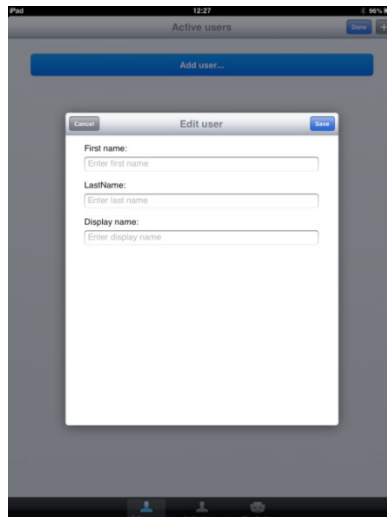


Figure Complete the edit fields

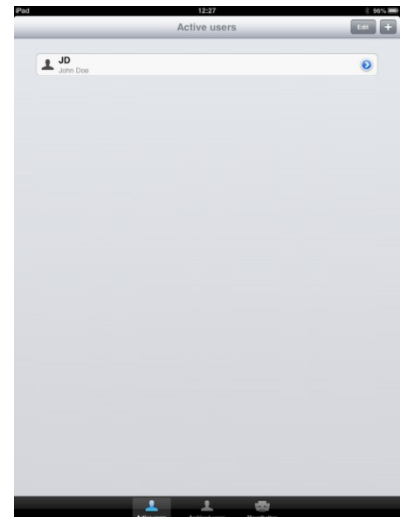


Figure A new user added to the list



## HARPO

To add more users, tap the plus sign (+) in the top right corner of the screen and follow the same steps as in Figure 2.

When you have created your user list, you may want to organize their files by creating folders.

First tap a user to open the main folder. Next tap the plus sign and select from the menu if you want to add a folder or add a file from the Mountbatten. Tap Add folder ... (see Figure 4) and when a small box pop up (see Figure 5), type the name of this new folder. Tap OK to finish.

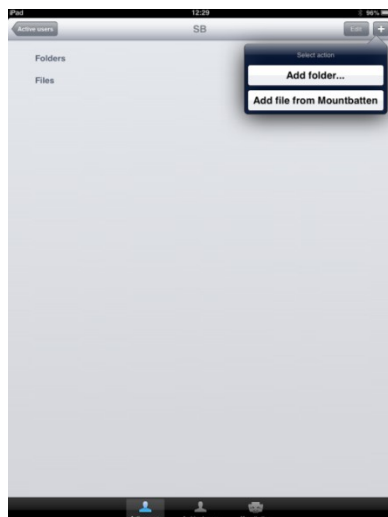


Figure Adding a new folder or file

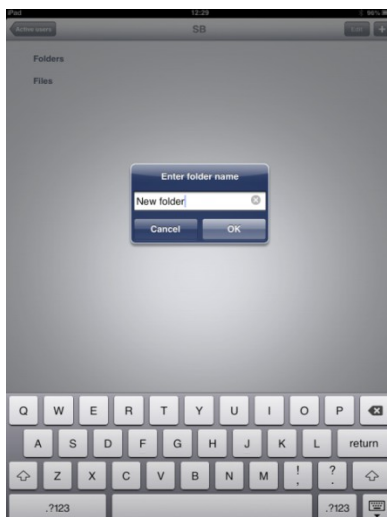


Figure Naming a new folder

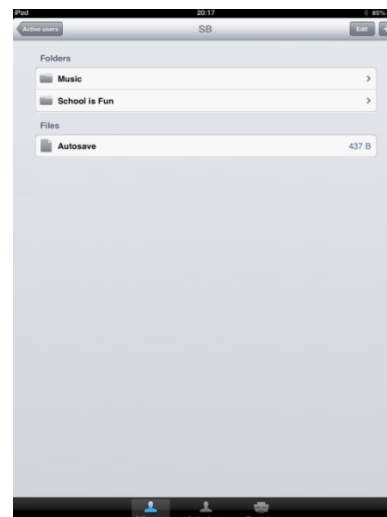


Figure Folders and files

Both, the folders and files can be deleted when not needed anymore. First tap the Edit button placed next to the Add button (the plus sign). You will notice red round icons pop up on the left hand side. When you tap on it, the Delete button will appear on the right hand side. Use this button to continue deleting. You will be asked again to confirm your decision (see Figure 7). Tap the Delete button to remove the item.

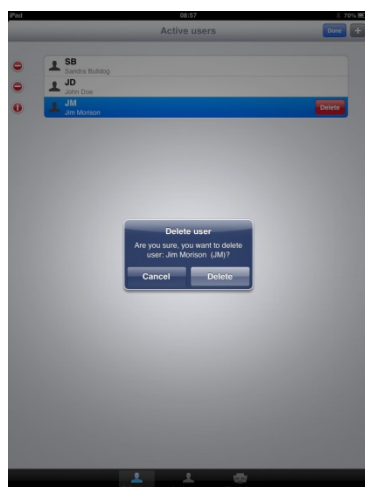


Figure Deleting an item

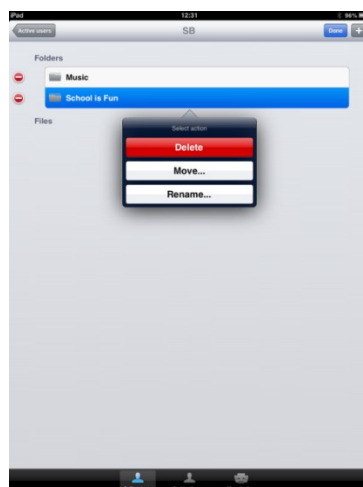


Figure Delete or edit an item

There is also another way to delete an item. After you have tapped the Edit button, tap on the item you want to delete. A three-option menu will pop up (see Figure 8). The topmost option is Delete. Tap it, confirm your selection, and the item will be deleted.

The same method lets you move or rename the item. You can move a folder or a file to a different user. When you have tapped the Move option in the menu (see Figure 8), you will be given a list of users where you can move the item to. Once you tap on a different user, the item (file or folder) will be moved to a new location.

Files stored in the User main folders or in subfolders can be manipulated in a number of ways.

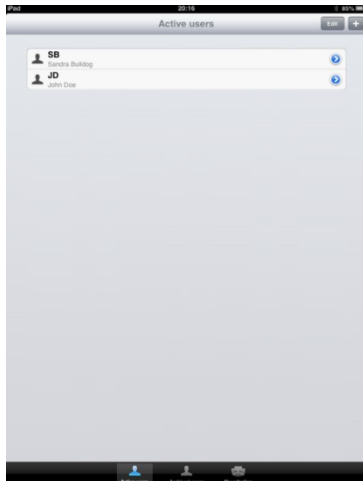


Figure A list of users

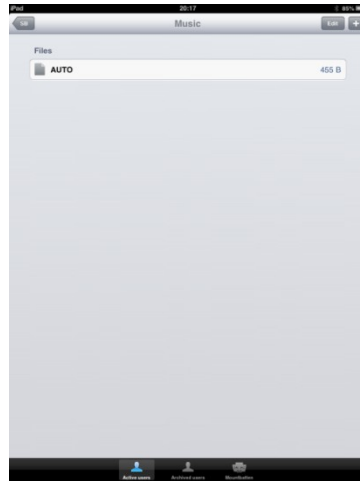


Figure A file list



Figure File menu

Once the file is tapped, a file menu opens up with the following actions (see Figure 11):

**View** – preview the content of the file

**Send to Mountbatten** – send to Mountbatten Memory

**Move** – move to a different location

**E-mail** – send it by e-mail

**Emboss** – emboss on the Mountbatten

**NOTE:** In the case of Send to Mountbatten and Emboss, if your MBMimic is not connected to a Mountbatten, the connection process will begin before the selected action is executed.

### 3. Connecting to a Mountbatten Braille

Before you beginning connecting to a Mountbatten Braille, please make sure that the Braille is turned on and paper is loaded.

Tap on the Mountbatten tab at the bottom of the screen of your iOS device. The program will be looking for any active Mountbatten in the vicinity. After a list appears, select the unit you want to connect to. A connection screen will show up saying “Connecting to Mountbatten” (see Figure 12). You should hear the Mountbatten beep several times and after a few seconds, your MBMimic will



## HARPO

connect with braille (see Figure 13). Tap Done and you will be taken to the home screen (see Figure 14).

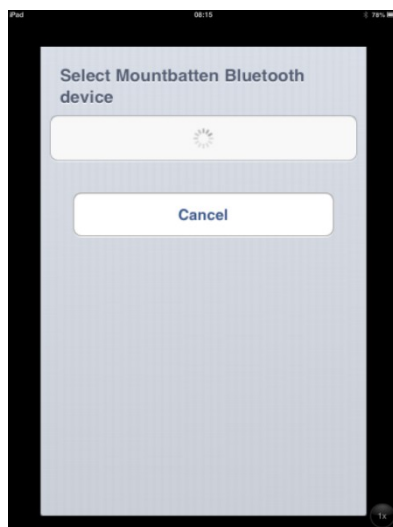


Figure Connecting to Mountbatten

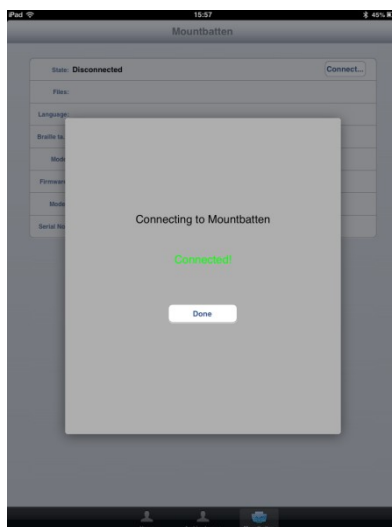


Figure Connection established

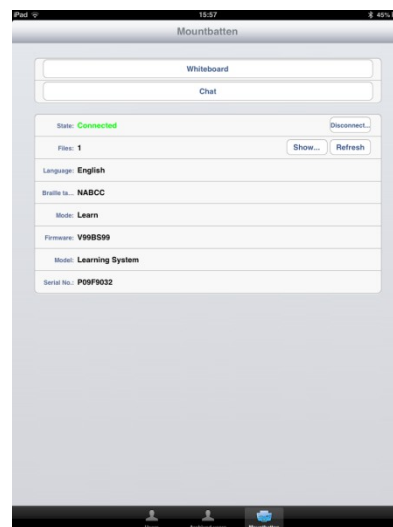


Figure MBMimic Home Screen

**NOTE:** The MBMimic looks only for a Mountbatten. It will not display any other Bluetooth-enabled devices so you never have to browse through long lists of devices to find the one you want to connect to.

From now on, you can begin interacting with the Mountbatten.

The home screen gives you the following options:

**Chat** (see Figure 16) – an application for chatting between the Mountbatten user and the iOS user.

**Whiteboard** (see Figure 15) – an application for various writing activities between the Mountbatten user and the iOS user

**Connection Status** – shows whether you have successfully connected to a Mountbatten

**Files** – this option shows how many files are stored in Mountbatten memory; the Show button allows you to open the Mountbatten directory listing the files stored in its memory

**Language** – this option informs you about the default language

**Braille table** – this option informs you about the default Braille Table

**Mode** – this options shows you which mode the Mountbatten is currently in; it can be either Learn or Advanced

**Firmware** – this option provides information about the firmware version

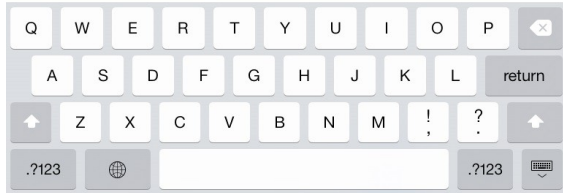
**Model** – this option shows the model version of your Mountbatten

**Serial No:** - this option provides the serial number of your Mountbatten

### 3.1 The Whiteboard

When you tap on the Whiteboard application a new screen opens with an edit area and a screen keyboard (see Figure 15). Every word you type will get embossed after the space bar is pressed on the screen keyboard. Similarly, every word gets brailled on the Mountbatten will be displayed on the screen once the Mountbatten user presses the space key on the Brailler.

In the top right corner you will find two buttons – Grade 1 and Grade 2. These two buttons correspond to contracted and uncontracted Braille output respectively. When you want your Braille output to be contracted make sure the Grade 2 button is pressed.



*Figure: Whiteboard screen with Braille code buttons*

### 3.2 The Chat

When you open the chat program, you will see a large white field, an edit box, and the screen keyboard (see Figure 16). The text is entered into the edit box but it will not be embossed until the Enter key or the OK button is tapped. When the Mountbatten user is brailing their entry, text will be displayed only after the New Line key is pressed on the Brailler.

In the top right corner you will find two buttons – Grade 1 and Grade 2. These two buttons correspond to contracted and uncontracted Braille output respectively. When you want your Braille output to be contracted make sure the Grade 2 button is pressed.

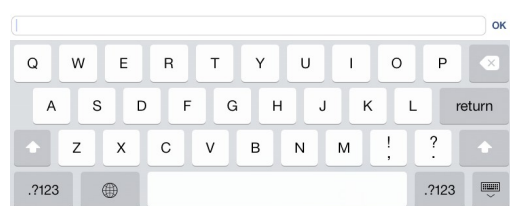
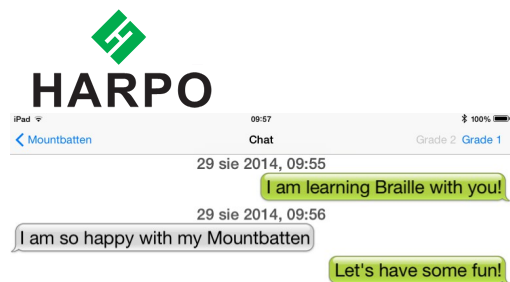


Figure The Chat

### 3.3 Transferring text from a text editor to MBMimic.

There is a variety of text editors for iOS available for download. One critical feature that is required to be compatible with MBMimic is that text can be saved as text file. To illustrate the process of transferring text from text editor to MBMimic, iAWriter has been selected.

1. Open the text you want to transfer.
2. If it is not your current document, tab the File browser.

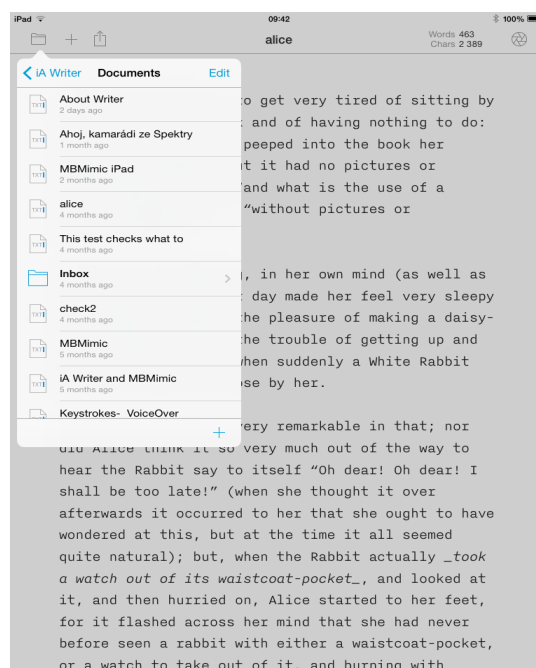


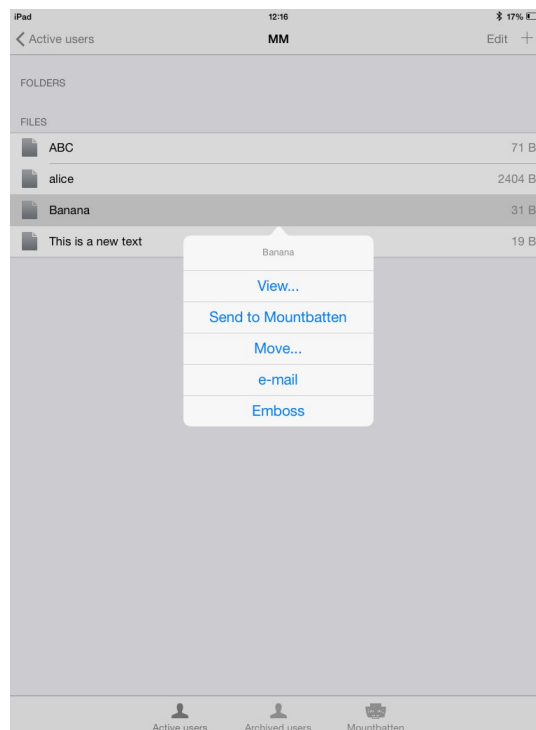
Figure: A file list in iAWriter

3. Scroll right until you find your text and open it.
4. Tap Export. Tap Open in, tap Open in MBMimic.
5. MBMimic will open up. Tap Save button. A screen with user folders opens up. Tap your username and then tap Save here or if you have created any folders tap that folder and then save the file there. Tap Done.

### 3.4 Embossing on Mountbatten Braille

#### A. Embossing directly after transferring text to MBMimic.

1. Turn the MB Braille on.
2. Take your iPad.
3. In MBMimic find your file that you want to emboss. Tap this file and menu will open up. select Emboss.



*Figure: File menu in Active Users folder*

4. The Connect to Mountbatten dialog will open up. Wait a few moments until your Mountbatten Braille will show up in the list. Tap the number that will pop up. You will hear the Mountbatten beep several times.
5. You will be asked if you want to translate the file to Braille or not. If your text does not have any embedded commands, and this text was created in a standard print format, it is recommended to choose Yes - use forward translation to Braille.
6. Once you tap your option, the Mountbatten will begin to emboss.
7. When the first page is embossed, put in a new sheet of paper . The embossing will resume automatically.





# HARPO

## 3.5 Transferring files from Mountbatten to MBMimic.

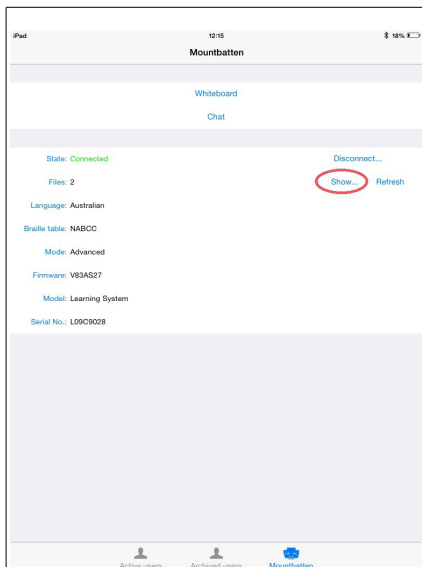


Figure: Select Show in Mountbatten tab

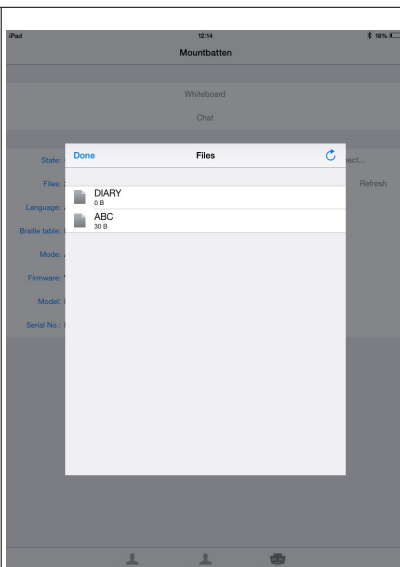


Figure: Select file to transfer

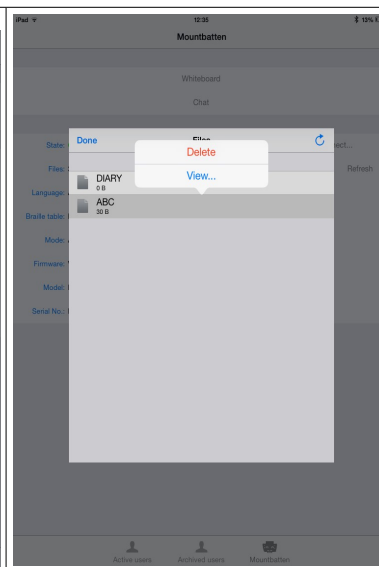


Figure: Choose View to open selected file

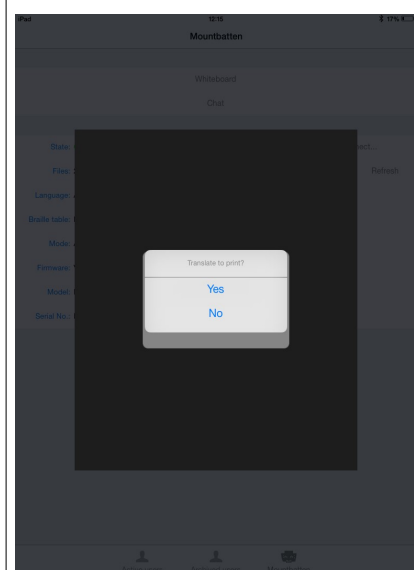


Figure: Select Yes to translate to print

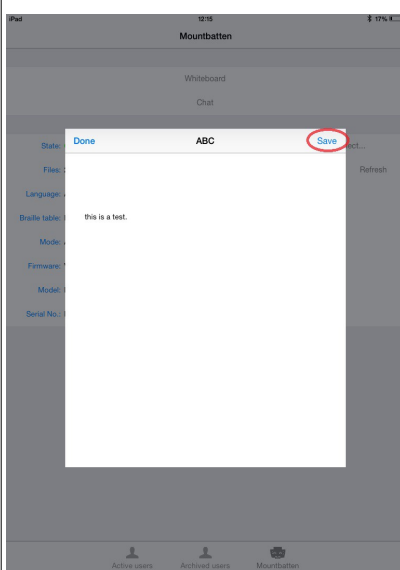


Figure: In top right corner tap Save

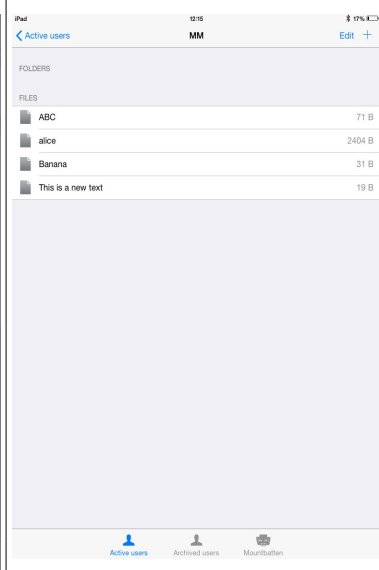


Figure: New file listed in the student's folder

1. Run your MBMimic and make sure the Mountbatten is also switched on.
2. After establishing connection between the MBMimic and the Mountbatten select the Mountbatten tab at the bottom of the screen. Locate the Show button and tap on it.
3. A list of files stores in your Mountbatten will show up. Select the one you want to transfer by tapping on it and choosing View from the menu.
4. The content of the file will open up. In the top right corner find the Save button. When you tap on it, you will be moved to Active Users tab. Select the student whose folder you want to transfer the file to, then select the location and tap the Save here button.
5. Then tap Done button in the next two dialogs, to complete the transfer. To check if the file was moved, go to Active Users, and locate the file in the previously selected directory.